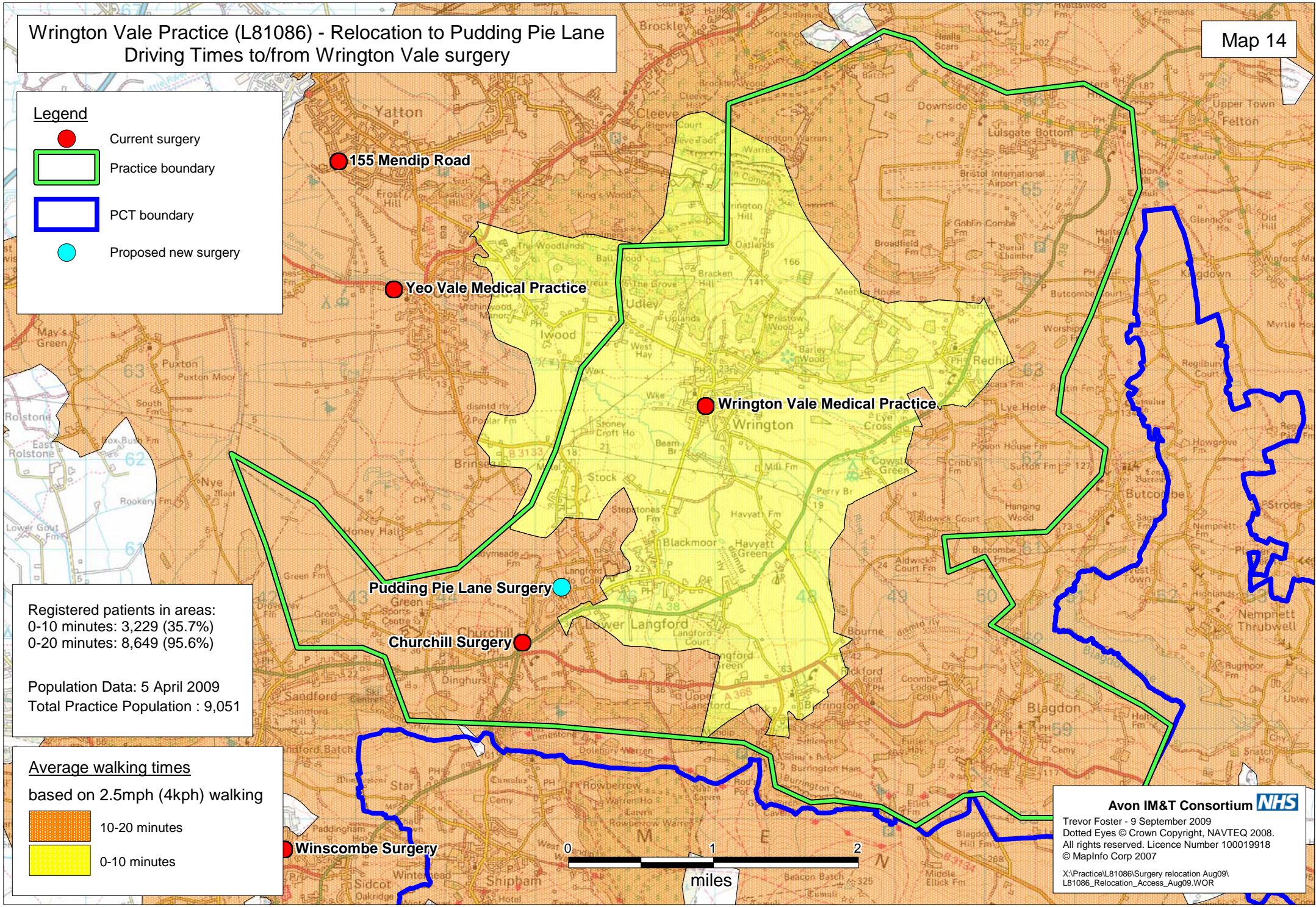


Wrington Vale Practice (L81086) - Relocation to Pudding Pie Lane
Driving Times to/from Wrington Vale surgery

Legend

- Current surgery
- Practice boundary
- PCT boundary
- Proposed new surgery



Registered patients in areas:
0-10 minutes: 3,229 (35.7%)
0-20 minutes: 8,649 (95.6%)

Population Data: 5 April 2009
Total Practice Population : 9,051

Average walking times
based on 2.5mph (4kph) walking

- 10-20 minutes
- 0-10 minutes



Avon IM&T Consortium NHS
Trevor Foster - 9 September 2009
Dotted Eyes © Crown Copyright, NAVTEQ 2008.
All rights reserved. Licence Number 100019918
© MapInfo Corp 2007
X:\Practice\L81086\Surgery relocation Aug09\
L81086_Relocation_Access_Aug09.WOR