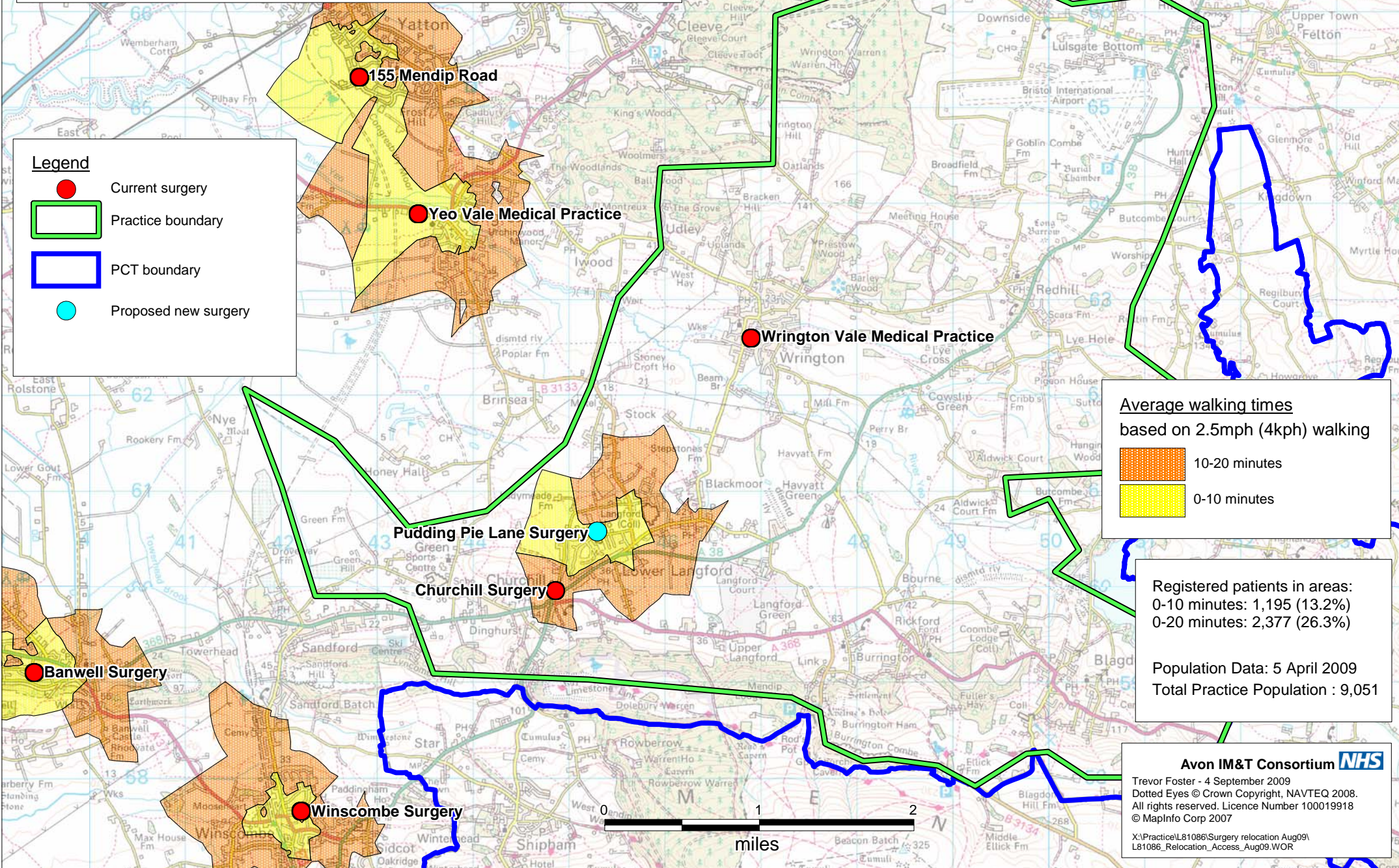


Wrighton Vale Practice (L81086) - Relocation to Pudding Pie Lane
Walking Access to/from Pudding Pie Lane and surrounding surgeries
(Yeo Vale, Winscombe and Banwell)

Legend

- Current surgery
- Practice boundary
- PCT boundary
- Proposed new surgery



Average walking times
based on 2.5mph (4kph) walking

- 10-20 minutes
- 0-10 minutes

Registered patients in areas:
 0-10 minutes: 1,195 (13.2%)
 0-20 minutes: 2,377 (26.3%)

Population Data: 5 April 2009
 Total Practice Population : 9,051

Avon IM&T Consortium

Trevor Foster - 4 September 2009
 Dotted Eyes © Crown Copyright, NAVTEQ 2008.
 All rights reserved. Licence Number 100019918
 © MapInfo Corp 2007

X:\Practice\L81086\Surgery relocation Aug09\
 L81086_Relocation_Access_Aug09.WOR