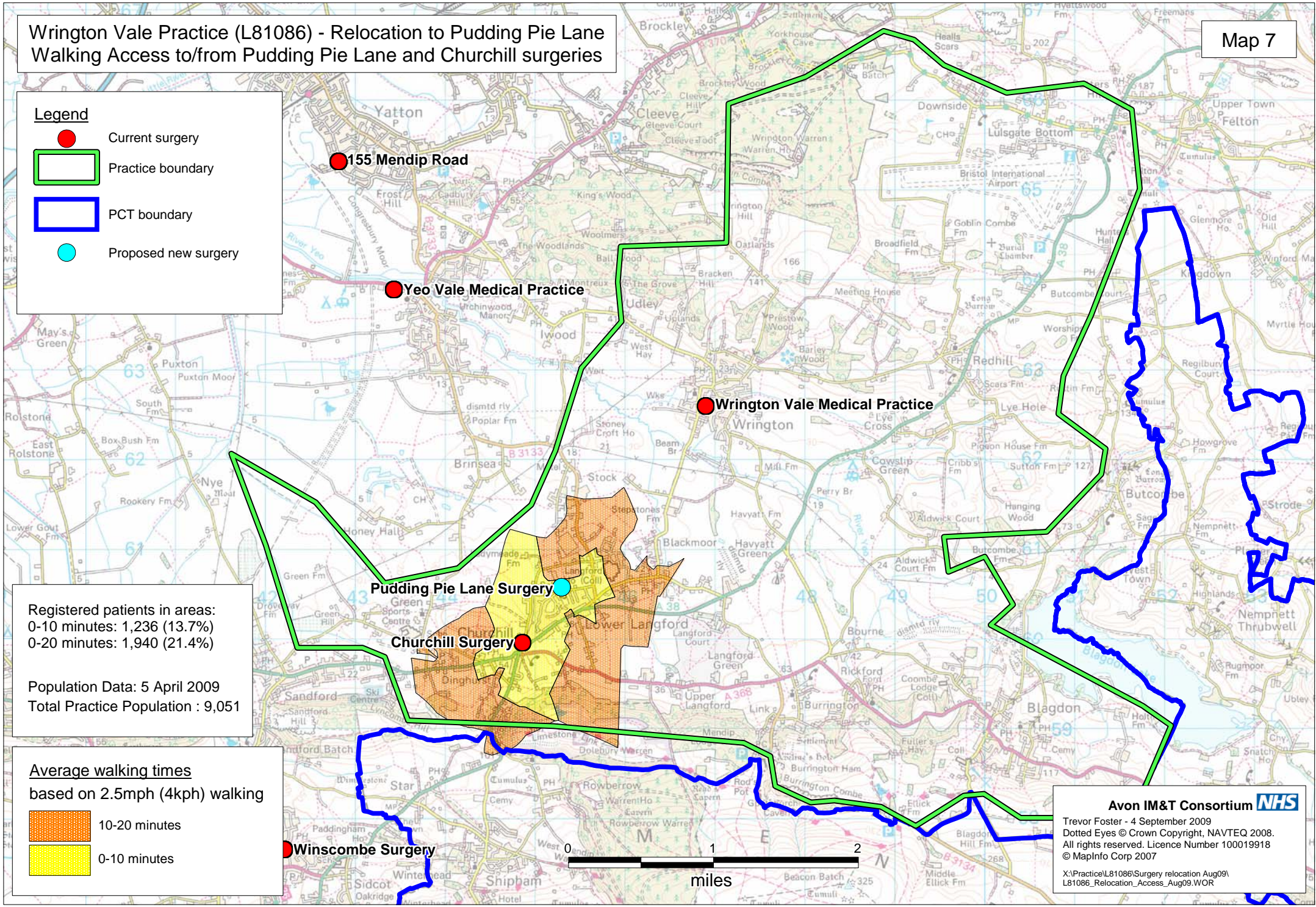


**Wrington Vale Practice (L81086) - Relocation to Pudding Pie Lane  
Walking Access to/from Pudding Pie Lane and Churchill surgeries**

**Legend**

- Current surgery
- Practice boundary
- PCT boundary
- Proposed new surgery



Registered patients in areas:  
 0-10 minutes: 1,236 (13.7%)  
 0-20 minutes: 1,940 (21.4%)

Population Data: 5 April 2009  
 Total Practice Population : 9,051

**Average walking times  
based on 2.5mph (4kph) walking**

- 10-20 minutes
- 0-10 minutes

**Avon IM&T Consortium NHS**  
 Trevor Foster - 4 September 2009  
 Dotted Eyes © Crown Copyright, NAVTEQ 2008.  
 All rights reserved. Licence Number 100019918  
 © MapInfo Corp 2007  
 X:\Practice\L81086\Surgery relocation Aug09\  
 L81086\_Relocation\_Access\_Aug09.WOR