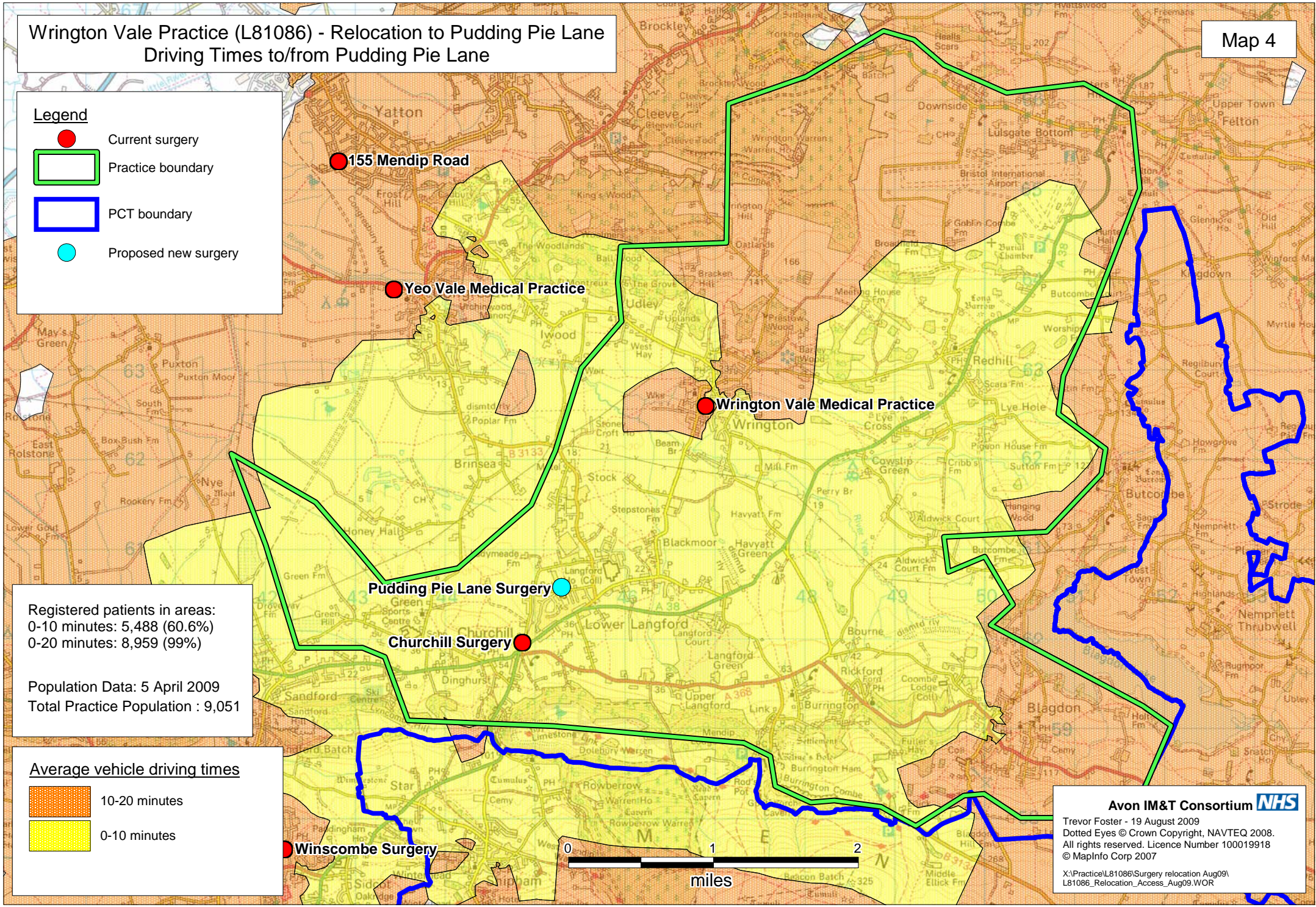


Wrington Vale Practice (L81086) - Relocation to Pudding Pie Lane
Driving Times to/from Pudding Pie Lane

Legend

- Current surgery
- Practice boundary
- PCT boundary
- Proposed new surgery



Registered patients in areas:
 0-10 minutes: 5,488 (60.6%)
 0-20 minutes: 8,959 (99%)

Population Data: 5 April 2009
 Total Practice Population : 9,051

Average vehicle driving times

- 10-20 minutes
- 0-10 minutes

Avon IM&T Consortium NHS
 Trevor Foster - 19 August 2009
 Dotted Eyes © Crown Copyright, NAVTEQ 2008.
 All rights reserved. Licence Number 100019918
 © MapInfo Corp 2007

X:\Practice\L81086\Surgery relocation Aug09\
 L81086_Relocation_Access_Aug09.WOR